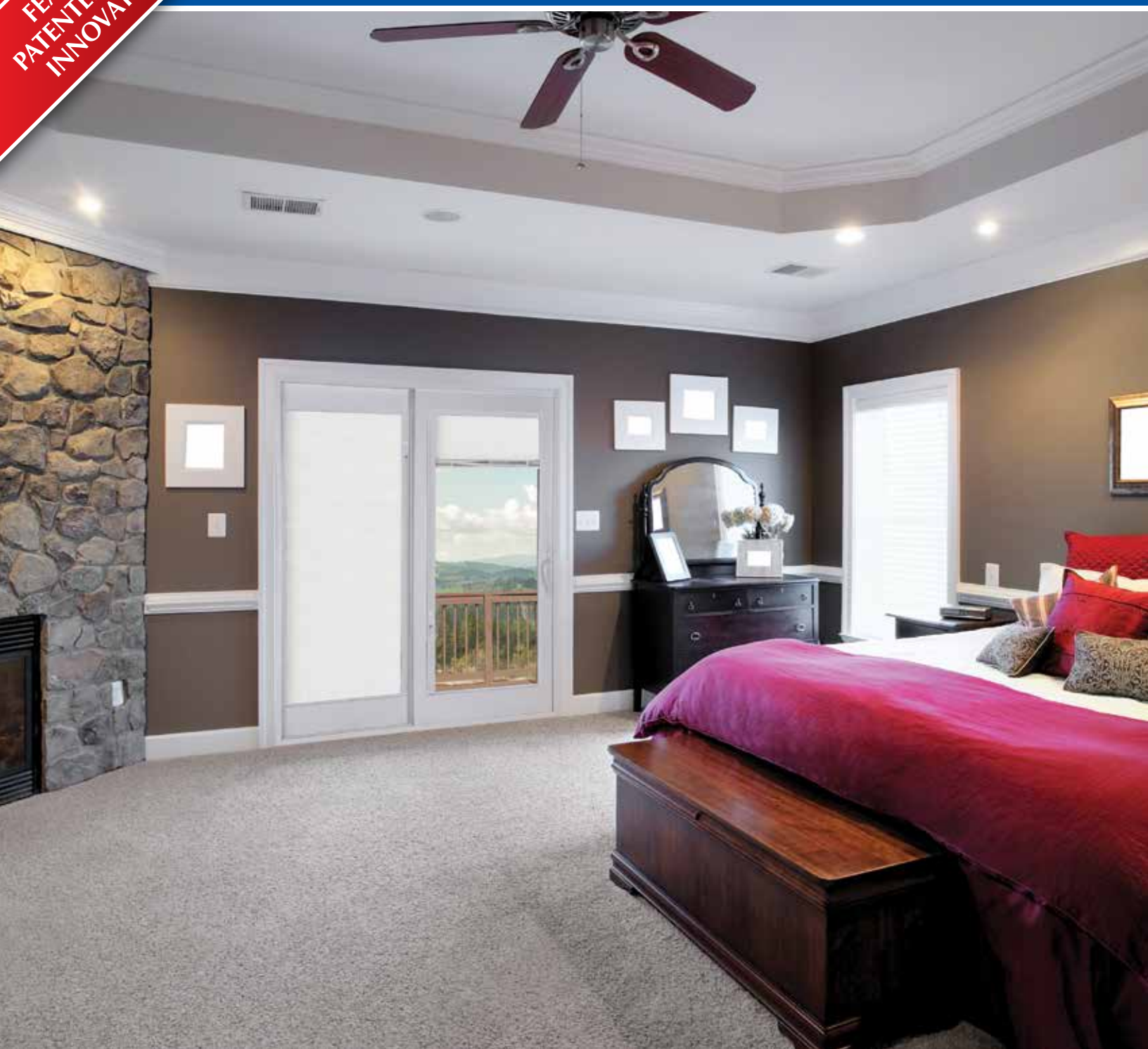


FEATURING
PATENTED DESIGN
INNOVATIONS+

A Beautiful Solution for Controlling Light



Integrated Mini Blinds

ON SLIDING PATIO DOORS



Integrated Mini Blinds on Select Sliding Patio Doors

Alpine Sliding Patio Doors now offer the added convenience of an integrated mini blind sealed in the insulated glass unit. This advanced design achieves a refined appearance as well as best-in-class durability and performance.

ADVANCED DESIGN AND CONSTRUCTION

1. A single operator tilts and lifts the blind for convenient control of sunlight and privacy.
2. No-slip gear belt provides smooth lift and tilt operation.
3. Single cord-winding shaft ensures improved “stack,” which prevents the blind from coming in contact with the glass surface.
4. Self-leveling bottom rail allows the blind to be re-leveled if it becomes unbalanced.

PRECISION-BUILT FOR SUPERIOR PERFORMANCE

- Blinds remain virtually dust-free in the sealed insulated glass unit.
- Added safety – integral cordless blinds eliminate the risk of children or pets getting entangled in the cords.
- Rigorously tested at 290,000+ cycles, far exceeding the industry standard of 3,500 cycles.
- Withstands use of doors opening and closing.
- Integrated mini blinds are backed by an **industry-leading 20-year limited warranty*** for added peace of mind.

ENERGY-SAVING OPTIONS

- ENERGY STAR® qualified options available.
- **SolarThermD LT** – Double-paned insulated glass unit with one pane of Low-E glass and stainless steel Intercept® Spacer.
- **SolarThermD LT SF** – Double-paned insulated glass unit with two panes of Low-E glass (surface 2 and 4) and stainless steel Intercept® Spacer.

AVAILABILITY BY DOOR SIZE AND STYLE (6' 8" door height only)

DOOR SIZE	6500 SERIES		
	CONTEMPORARY	CLASSIC	FRENCH
5-Foot	•	•	•
6-Foot	•	•	•
6.25-Foot (Wisconsin)	•	•	•
8-Foot	–	•	–
9-Foot	•	•	•
12-Foot (3-Panel)	–	•	–
12-Foot (4-Panel)	•	•	•



This esteemed certification recognizes Alpine window plant operations for superior quality management in production of consistently high-quality, energy-efficient windows and patio doors. We are one of only a few U.S. window manufacturing operations to earn this world-class quality distinction.



19720 Bothell-Everett Highway SE Bothell, WA 98012
1.800.800.5920 www.alpinewindowssystem.com



Please recycle



Integrated mini blinds will feature a white blind.